

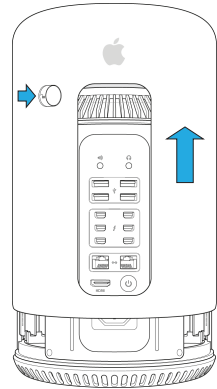


SWITCHD
MAC PRO LOCK

INSTALLATION GUIDE

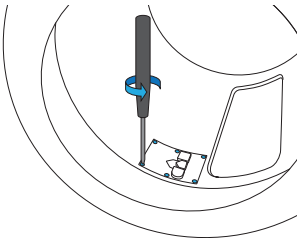
1

Remove the enclosure from the computer by sliding the switch to the right and lifting the enclosure up.



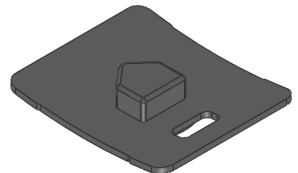
2

Using the supplied screwdriver, remove the six screws retaining the switch on the inside of the enclosure and lift out the backing plate.



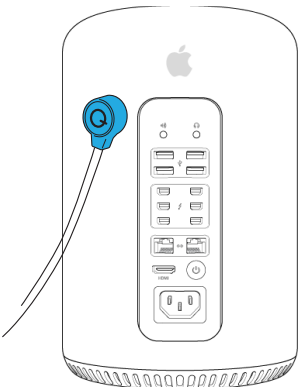
3

Remove the original switch, install the replacement switch, and restore the backing plate and six screws.



4

Return the enclosure and slide the switch to the left. Install cable lock into the exposed hole.



Identified Media, LLC
24 Riverside Dr.
Peralta, NM 87042
orders@macprolock.com

100% Satisfaction Guarantee

Our kit comes with a Lifetime Warranty and a no-questions asked return policy. If you are not happy with your product simply send it back and we will refund your money.